



Ha'iku Community Association  
PO Box 1036, Haiku, HI 96708  
[www.haikumauui.org](http://www.haikumauui.org)

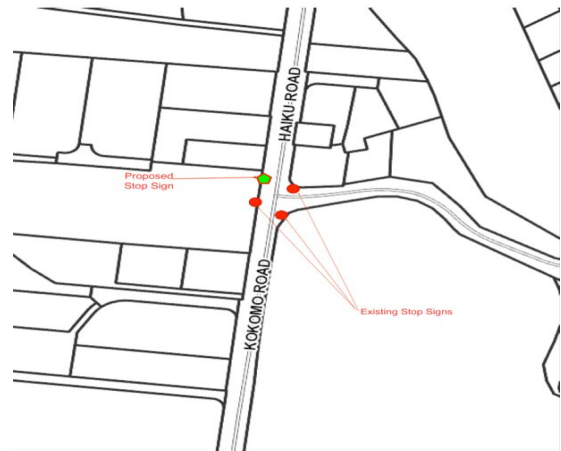
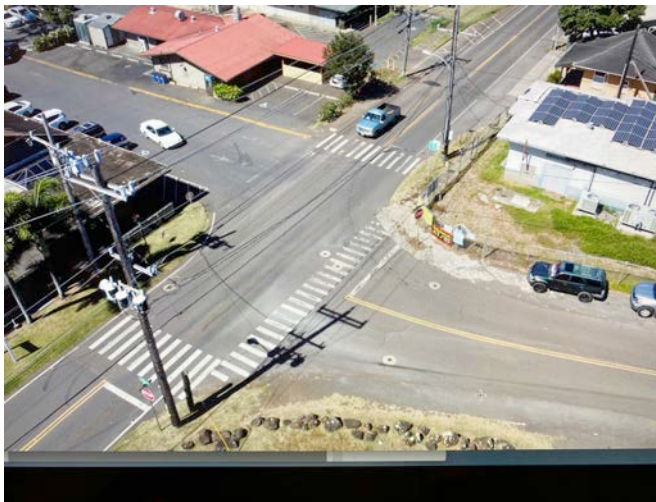
10 December 2021

To: Maui County Council Member Mike Molina  
Requests to improve the safety of the main intersection in Ha'iku Town  
From: Tim Wolfe, Board Member of the HCA and concerned Haiku citizen

Aloha Mike,

Please pass along our holiday greetings from the HCA to Chairperson Sugimura and your fellow Members of the Infrastructure and Transportation Committee. It was gratifying to receive thanks from members of the committee at the bluejeans meeting of October 6<sup>th</sup>. I was able to report that the HCA had considered Agenda Item (IT-35), and decided not to request a 4<sup>th</sup> stop sign be added in Ha'iku Town at this time. The IT Committee was able to close out that item.

Thank you again for the attention that you and your Executive Assistant Ana Lillis have devoted to our concerns about safety issues. We support adding safety measures that will benefit pedestrians, vehicle drivers, and local business operators in our community. Please accept this letter as a statement of our current concerns regarding these important safety matters. This comprehensive summary will help everyone concerned to visualize the situation out here in your district.



This aerial photo and graphic show the main intersection in “downtown” Ha'iku. There are three stop signs here now, as shown in the graphic and the photos below. One at the east corner where Haiku Road heads on out into the Haiku community, one at the south corner of Kokomo Road, and one at the parking lot exit from the Aloha Aina Center on the west corner. There is no sign at the north corner in front of Nuka Restaurant, the red roof in the above photo, which is now a local landmark. It is next door to our post office at 96708.



East Corner; Haiku & Kokomo



South Corner; Kokomo Road



West Corner: Aloha Aina Center



Crosswalk at the North Corner; Nuka Restaurant

Local residents traveling mauka up Haiku Road are accustomed to driving into this intersection without stopping. This poses a threat both to pedestrians and also to other drivers who are unfamiliar with this neighborhood. The area in front of Nuka, on the shoulder of Haiku Road, is now being used as a parking space, right up to the crosswalk. The owner of the Aloha Aina Center and the owner of Nuka support the addition of "no parking anytime" signs in the shoulder area in front of the Nuka parking lot on Haiku Road and directly across the street by the substation fence.



In the following sequence of photos, imagine you are trying to turn out of the Aloha Aina parking lot from the stop sign pictured on the west corner at "810". With cars and trucks parked on the west side of the street, traffic coming up Haiku road, often at a high speed, can be invisible until the last moment. This is dangerous for a vehicle to turn in either direction, and for pedestrians.



The Department of Public Works has cleaned up the crosswalk and installed a post in the middle of Ha'iku Road that said "State Law - Stop for Pedestrians". New "No Parking Anytime" signs would prevent illegal parking in the area on the west side of Ha'iku Road makai of the Crosswalk Sign.



Here is clear evidence why this short signpost does not solve the problem for pedestrians. Not only does traffic often continue without slowing down, the sign itself is more often found flat on the ground rather than upright on the street.

This post has been replaced on its pavement mount several times, and is now gone. A proven failure to communicate. Cars continue to park in front of Nuka obscuring visibility at the corner.



Improved signage, like the “flashing crosswalk” and the “Stop Here for Pedestrians” signs that are installed on Hana Highway east of the Community Center would both provide extra safety for pedestrians, and also serve to alert drivers to slow down at this north corner that has no stop sign.



This sign is equipped with a solar charged alternating flasher that a pedestrian can activate for safe passage across a main road at a clearly marked crosswalk. Let's add one in town.

An additional improvement here would be to add shallow surface ribs or white dots to the shoulder of Ha'iku Road that is currently marked with painted lines as a "no parking area" in front of Nuka makai of the crosswalk. Could the County continue the sidewalk up to the corner?



We request that "No Parking Here to Corner" signs be installed for the area in front of Nuka. Because there is limited parking around the post office, it is common for people to park on Ha'iku Road in front, which can cause traffic problems. A "No Parking Loading Zone" sign installed by the sidewalk in front of the building would be a realistic warning and improve sightlines to the corner.



The HCA could organize a community project in coordination with the Maui MPO to design and paint these "no parking" hash mark areas for greater visibility and impact.



Witnesses have reported that traffic driving makai down Kokomo Road sometimes fails to observe the stop sign at the corner with Ha'iku Road, in spite of a warning sign and speed humps before the corner. Officer Devin Schoeppner has been observing the traffic at this busy intersection. He reports that the traffic coming down Kokomo Road sometimes fails to stop at the corner at all.

We request that a stop sign with solar battery operated red LED lights at each corner of the octagon be installed to replace the present sign. The installation pictured is at Oma'opio Road and Kula Highway. The red LED lights flash and get your attention even in bright daylight.



We also suggest that the addition of small "Three Way Stop" signs be added below the three existing stop signs at this intersection. These would be similar to the small "All Way" signs that were added to signs on Ha'iku Road at the intersection with Kauhikoa Road some years ago.

And finally, in the interest of safety for everyone, and especially for the students in Roots School just down Ha'iku Road, we request that the Department of Public Works consider several items. One; new paint for the crosswalk at Roots. Two; extend the sidewalk from the Post Office to the private road mauka of the school. And Three; install a radar "Your Speed" sign on Ha'iku Road to slow down all the traffic coming into town from the Hana Highway side. Slow down the speeders.





Thank you all for the addition of these safety features to the center of Ha'iku Town. Icing on the cake might be the addition of one more crosswalk hatching painted at the entrance to the Aloha Aina Center and Nuka parking. This is private property. Is a permit required to paint a crosswalk?

The members of the Ha'iku Community Association and the citizens of Ha'iku look forward to working with the Maui County Council Infrastructure and Transportation Committee and Councilmember Mike Molina to improve safety in our town for now and for generations to come.

Mahalo nui loa.

Respectfully Submitted by Tim Wolfe, [wolfemanmaui@gmail.com](mailto:wolfemanmaui@gmail.com), 808-575-7474